



Ministry of Agriculture, Livestock and Irrigation

Department of Agriculture



Evaluation of Rice Yield from Demo Farm in Myanmar

Daw Ei Myat Mon

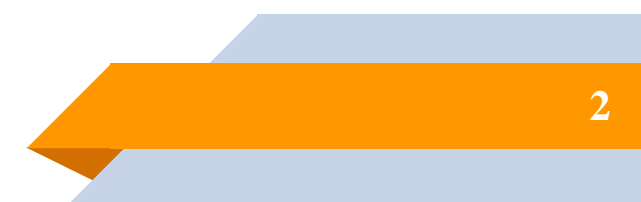
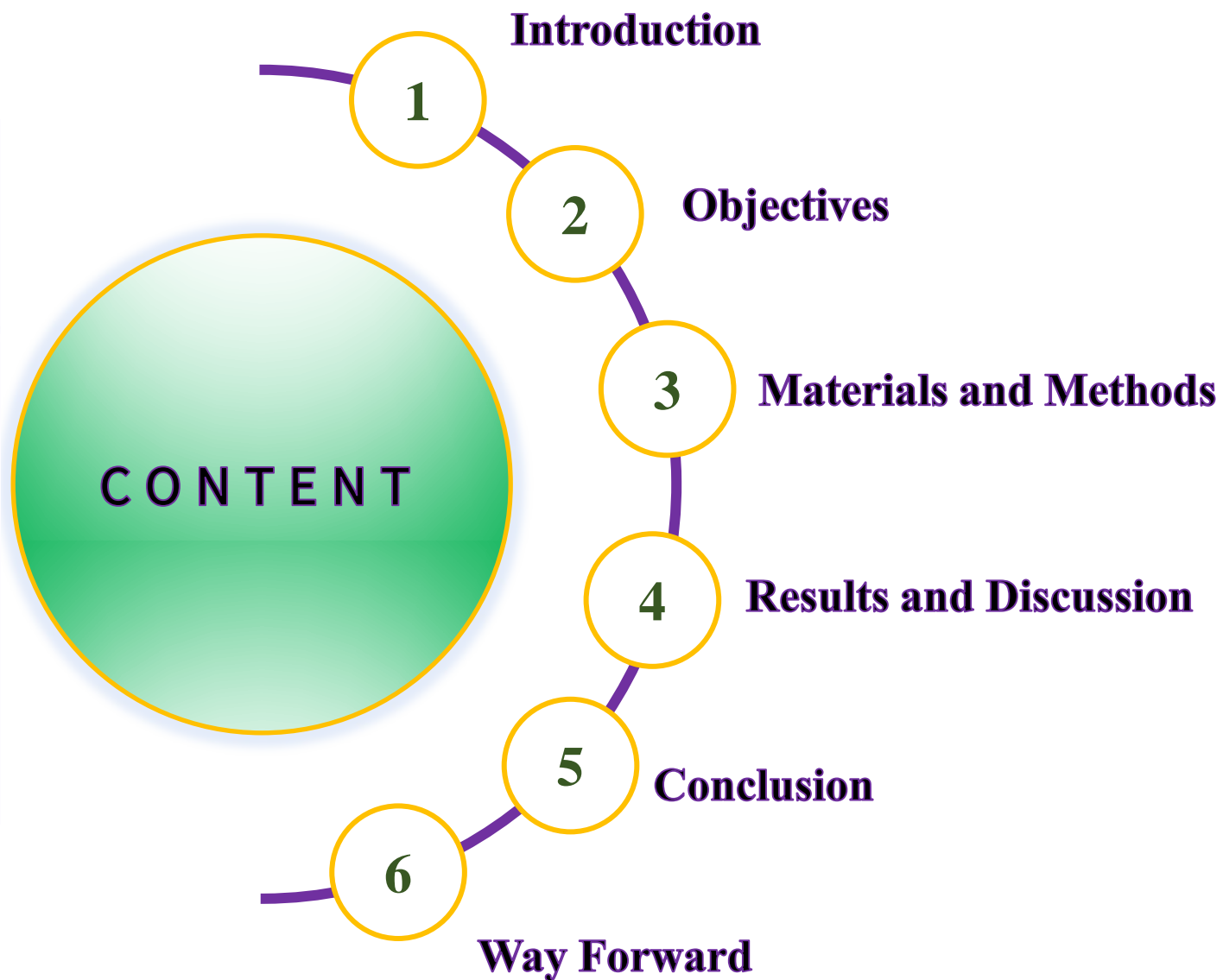
Deputy Staff Officer

Rice Division (HQ)

eimyatmon.doa@gmail.com; 09265286152

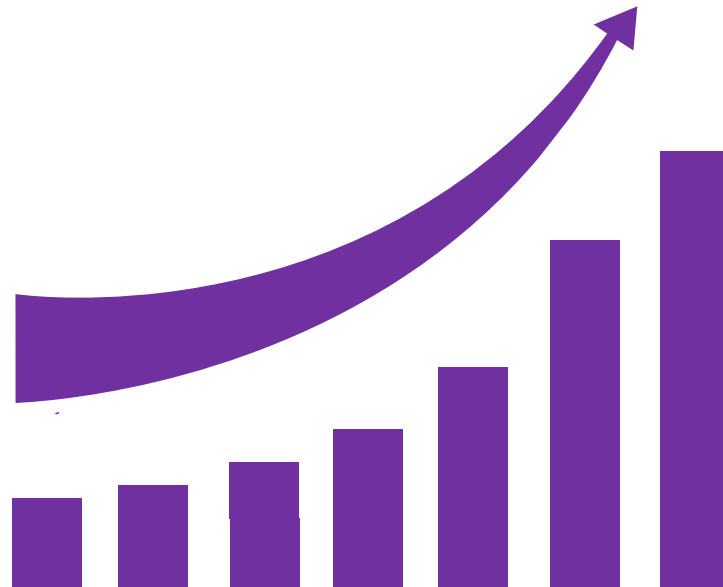
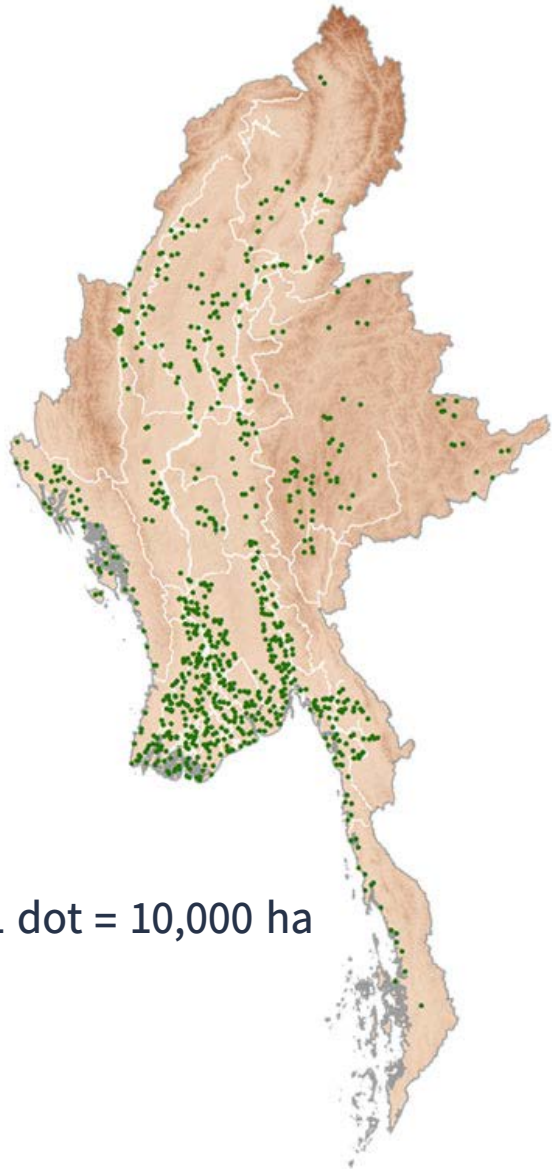
27 ~ 29 February 2024

The 6th YSI Symposium of Department of Agriculture in Nay Pyi Taw



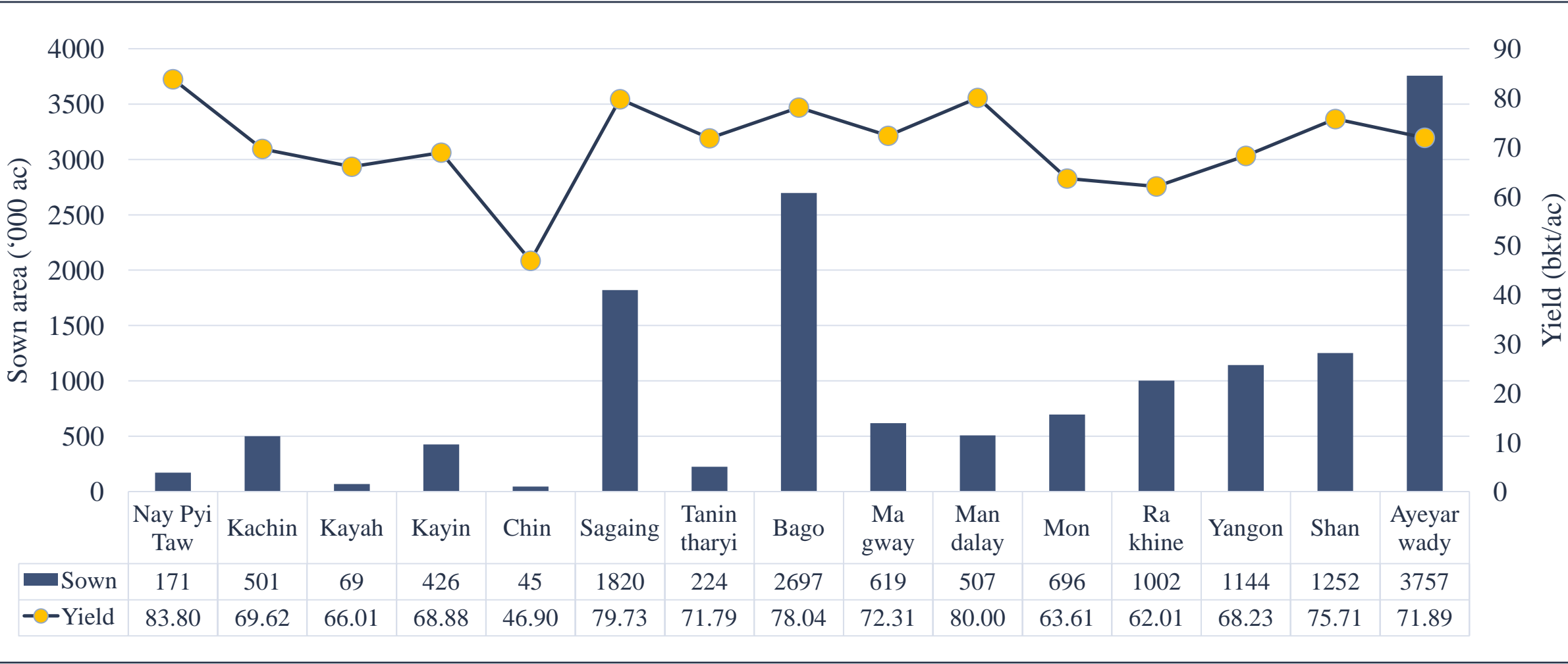
INTRODUCTION

- Rice is a crucial agricultural commodity in terms of both production and trade.
- It is a major export crop as well as the staple food of Myanmar people.
- Over 70% of people in rural areas grow rice, that accounts for 43% of total crop production area in Myanmar.

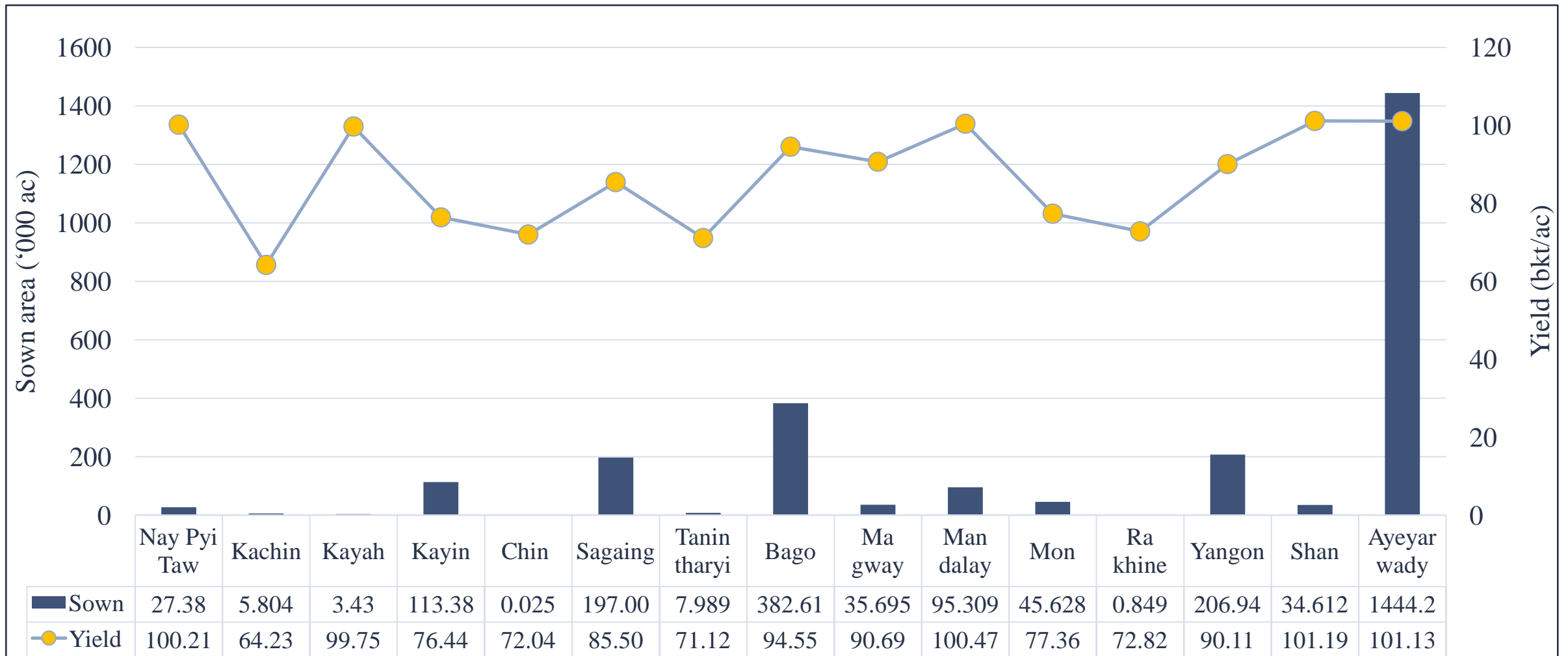


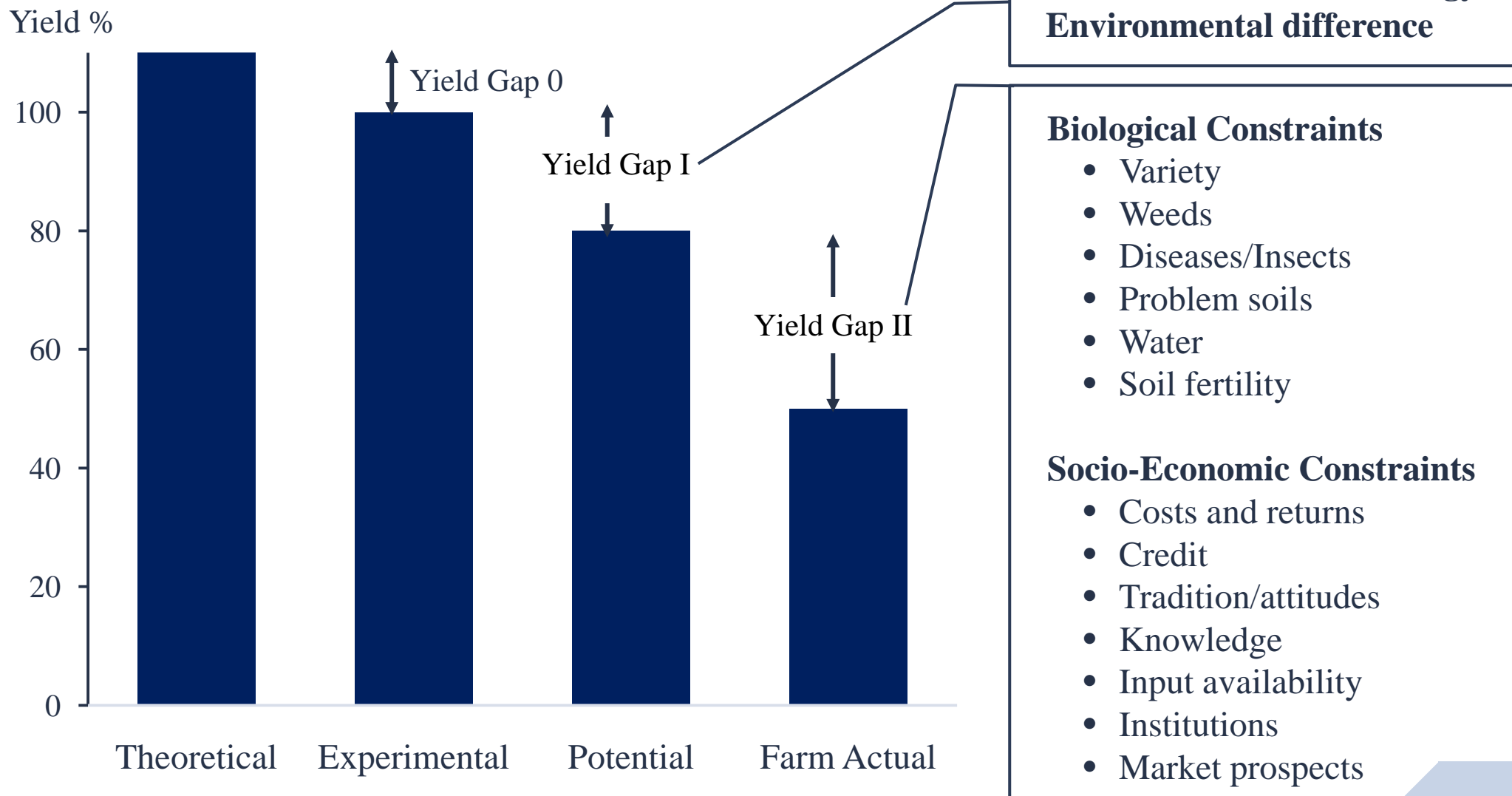
“Sustainable increase in rice productivity” is one of key themes highlighted in Myanmar Rice Sector Development Strategy.

Monsoon Rice Production 2022-2023



Summer Rice Production 2022-2023

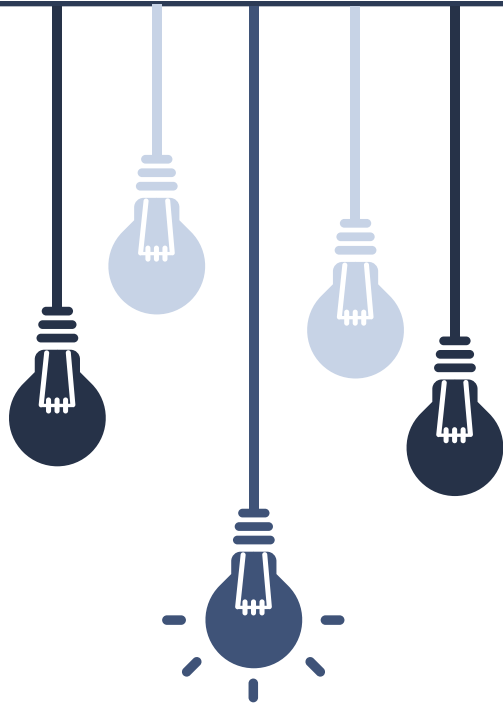




(Source: De Datta et al 1978)

OBJECTIVES

- To share farming practices that promise to increase rice productivity.
- To evaluate rice yield achievement from Demo Farm.
- To accelerate the sustainable increase in rice productivity in Myanmar.





MATERIALS AND METHODS

- Sixteen Demo Farms were carried out at 12 regions and states during monsoon rice growing season.
- Ten Demo Farms were carried out at 9 regions and states during summer rice growing season.
- Selection for Demo Farm was made in order to follow the 14 good farming practices, which has been recommended by the Department of Agriculture.
- Farmers were encouraged with the subsidies by the Government for producing rice to meet a target yield.
- Data analysis was done by Microsoft Excel from the reports submitted by related Demo Farms.

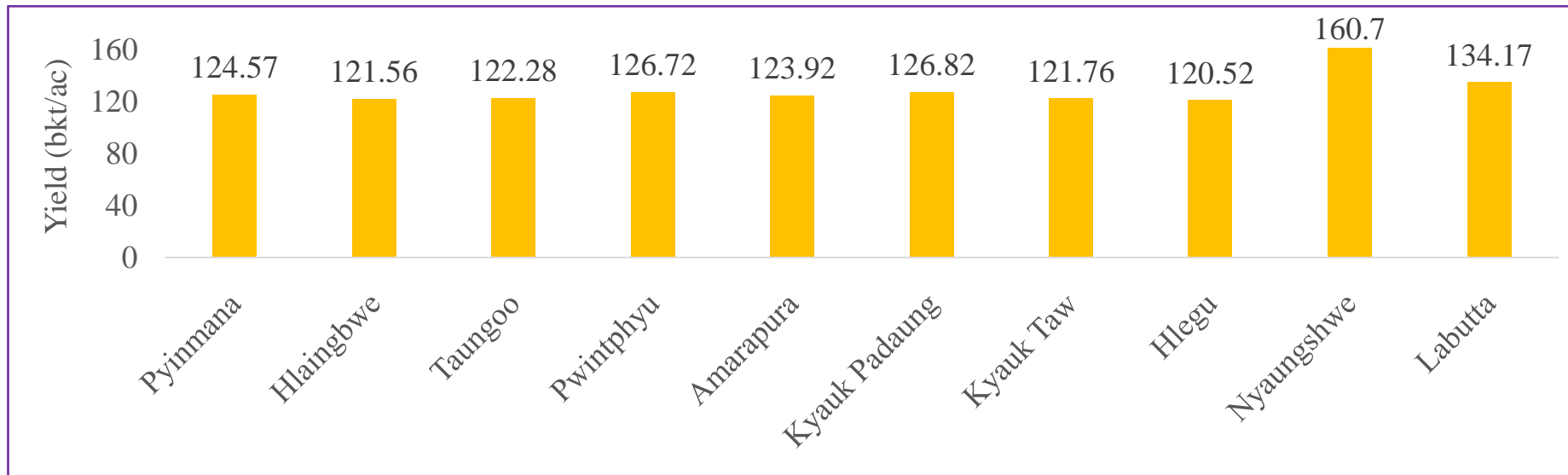
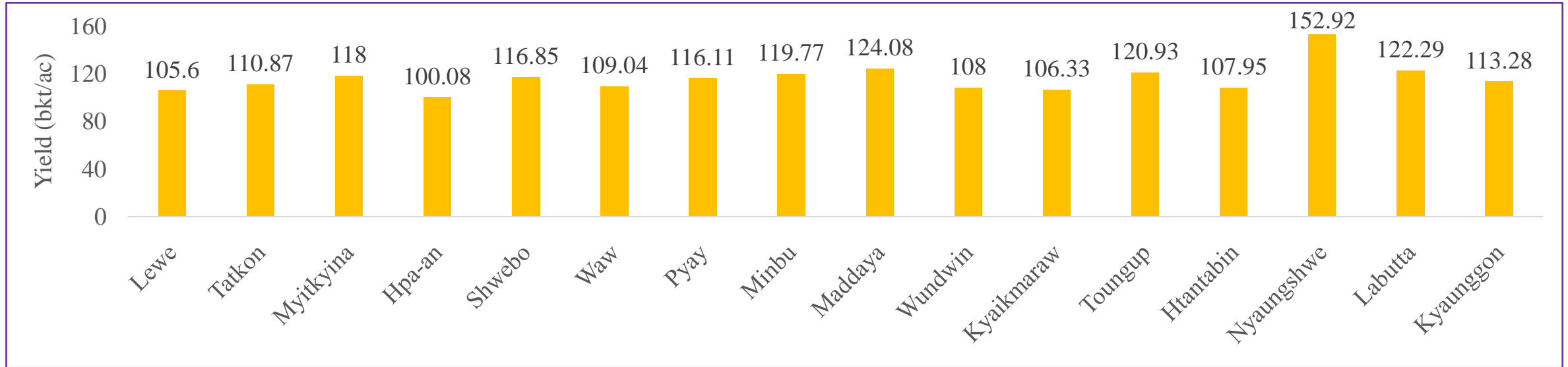
Monsoon season 2022-2023

No.	State/Region	Township	Sown (ac)
1	Naypyitaw	Lewe	100
		Tatkon	100
2	Kachin	Myitkyina	100
3	Kayin	Hpa-an	100
4	Sagaing	Shwebo	100
5	Bago	Waw	100
		Pyay	100
6	Magway	Minbu	100
7	Mandalay	Maddaya	100
		Wundwin	100
8	Mon	Kyaikmaraw	100
9	Rakhine	Toungup	100
10	Yangon	Htantabin	100
11	Shan	Nyaungshwe	100
12	Ayeyarwady	Labutta	100
		Kyaunggon	100
Total Union		16	1600

Summer season 2022-2023

No.	State/Region	Township	Sown (ac)
1	Naypyitaw	Pyinmana	100
2	Kayin	Hlaingbwe	100
3	Bago	Taungoo	100
4	Magway	Pwintphyu	50
5	Mandalay	Amarapura	100
		Kyauk Padaung	100
6	Rakhine	Kyauk Taw	50
7	Yangon	Hlegu	100
8	Shan	Nyaungshwe	100
9	Ayeyarwady	Labutta	100
Total Union		10	900

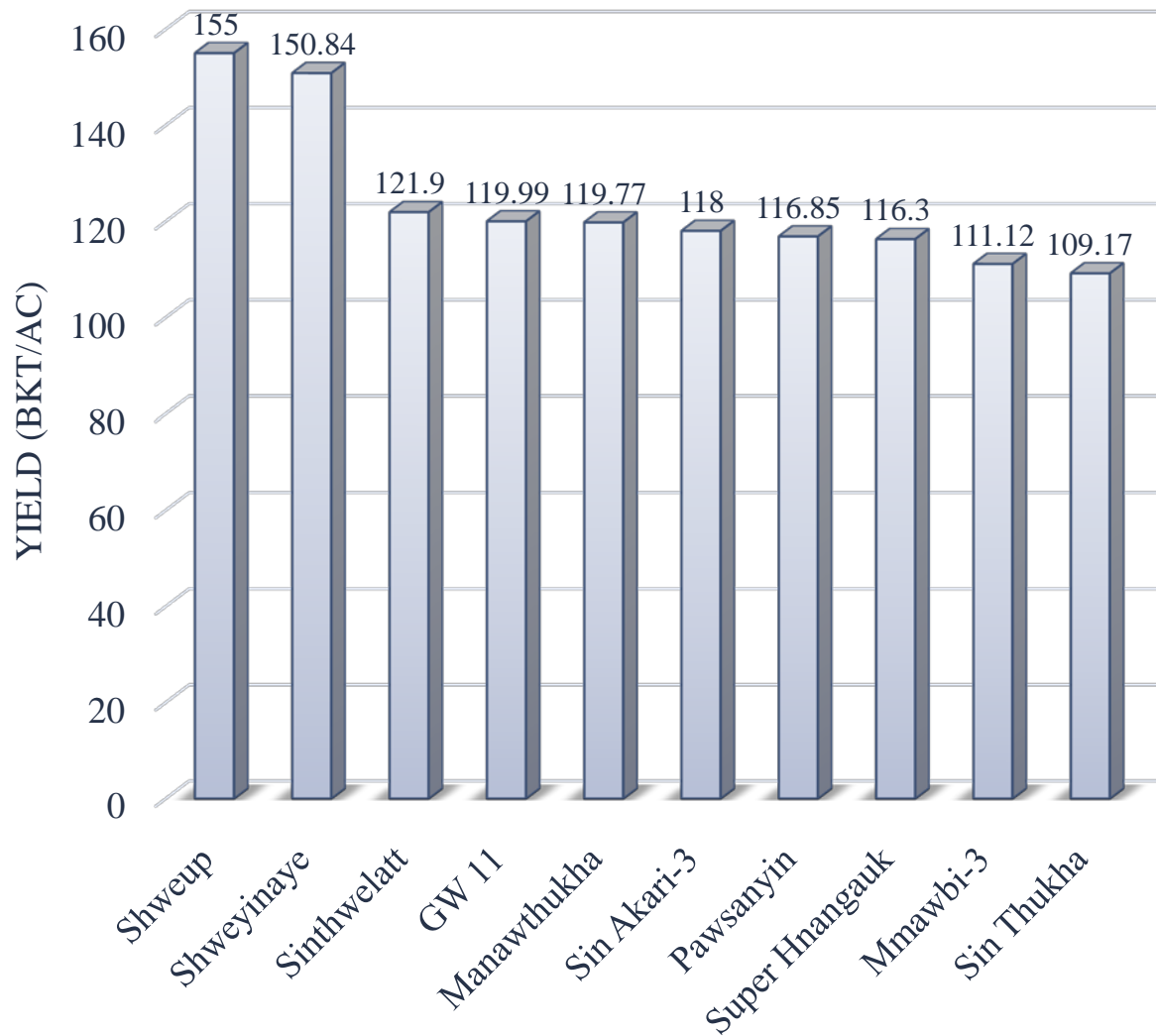
RESULTS AND DISCUSSION



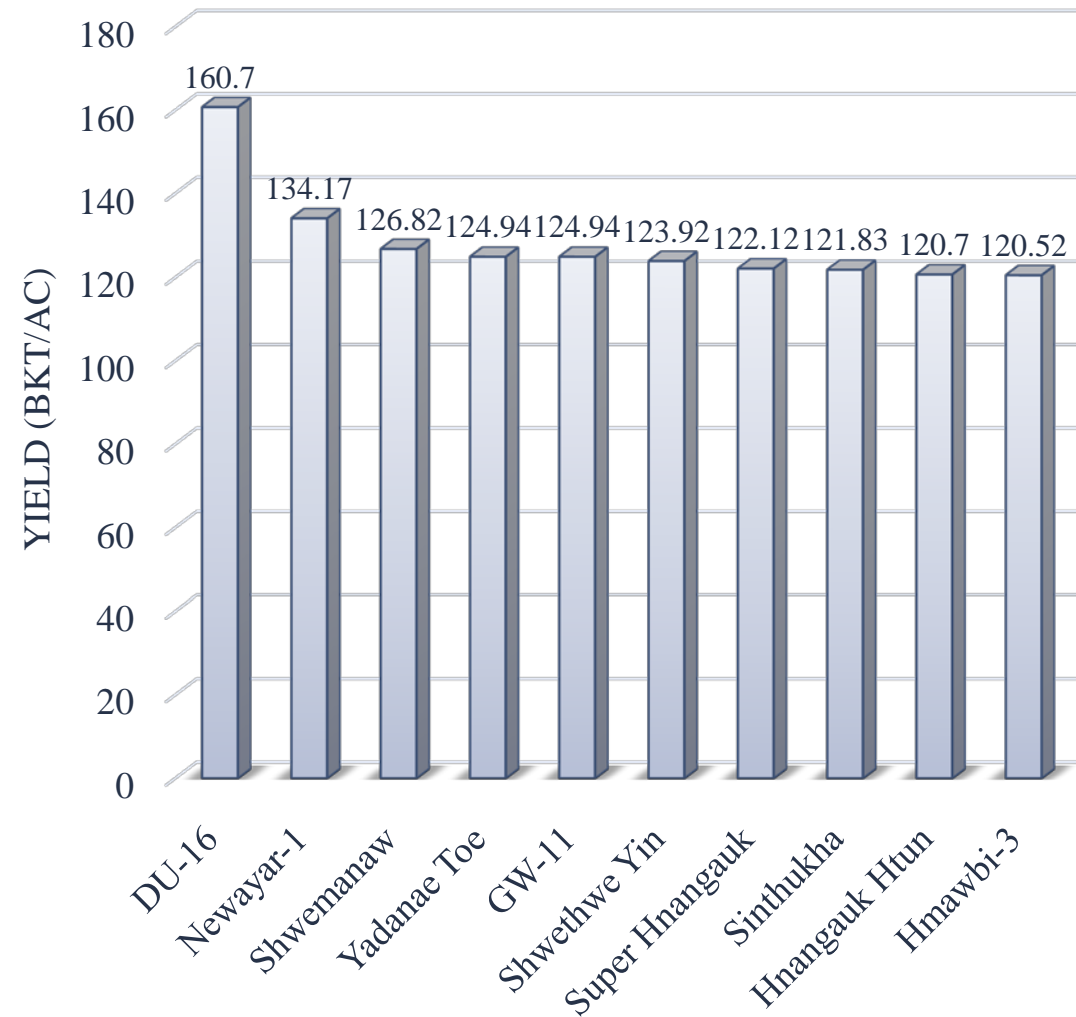
↑
Monsoon season

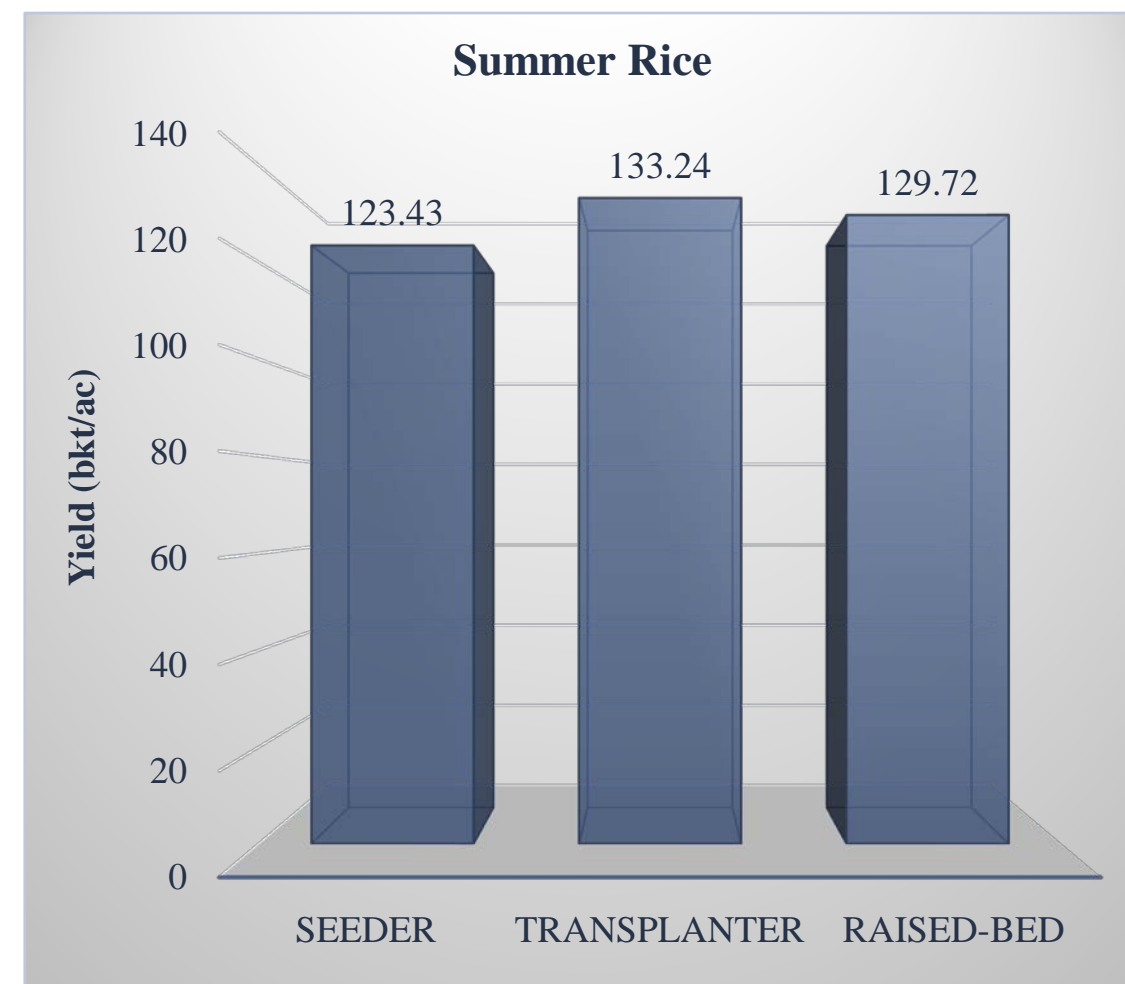
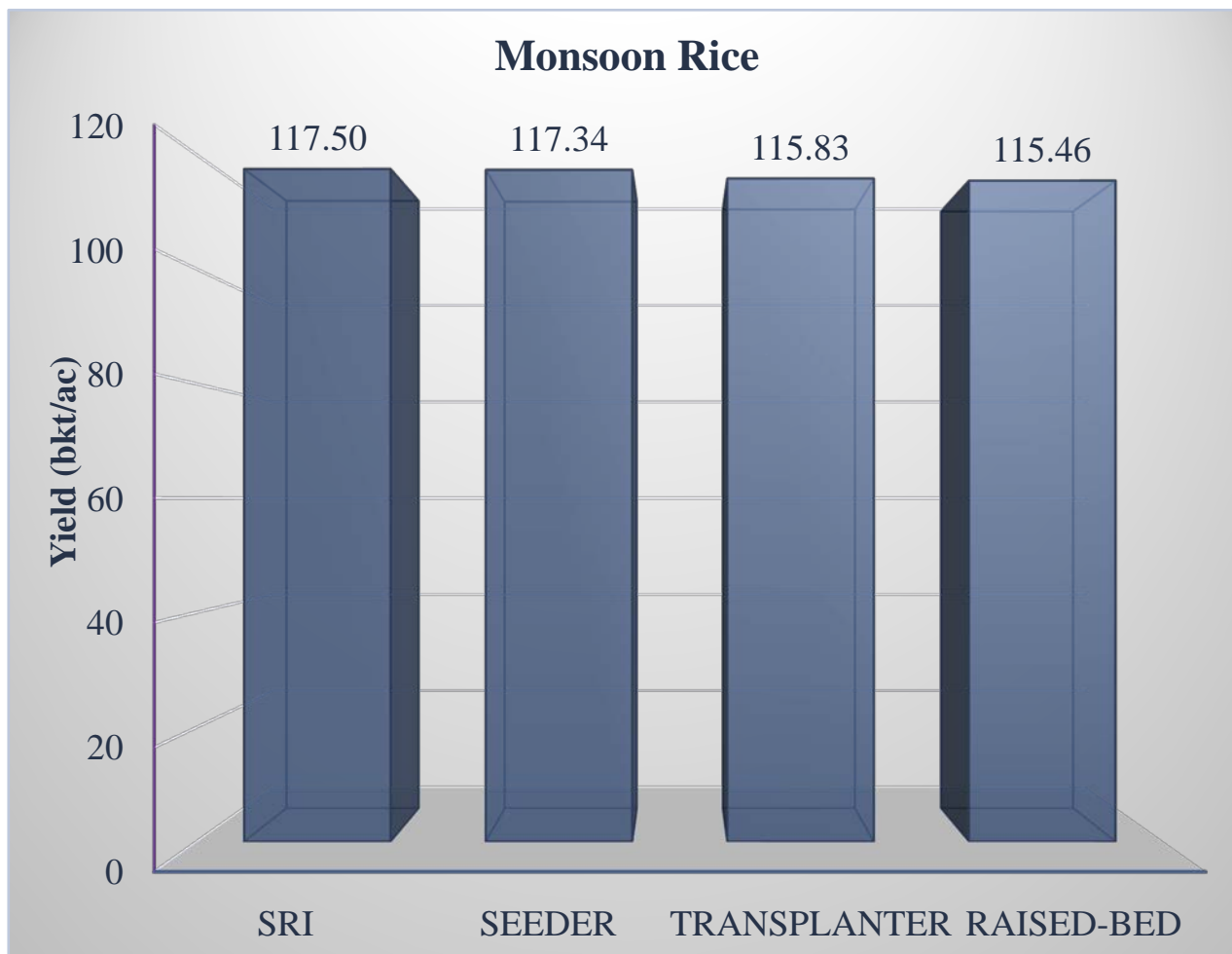
←
Summer season

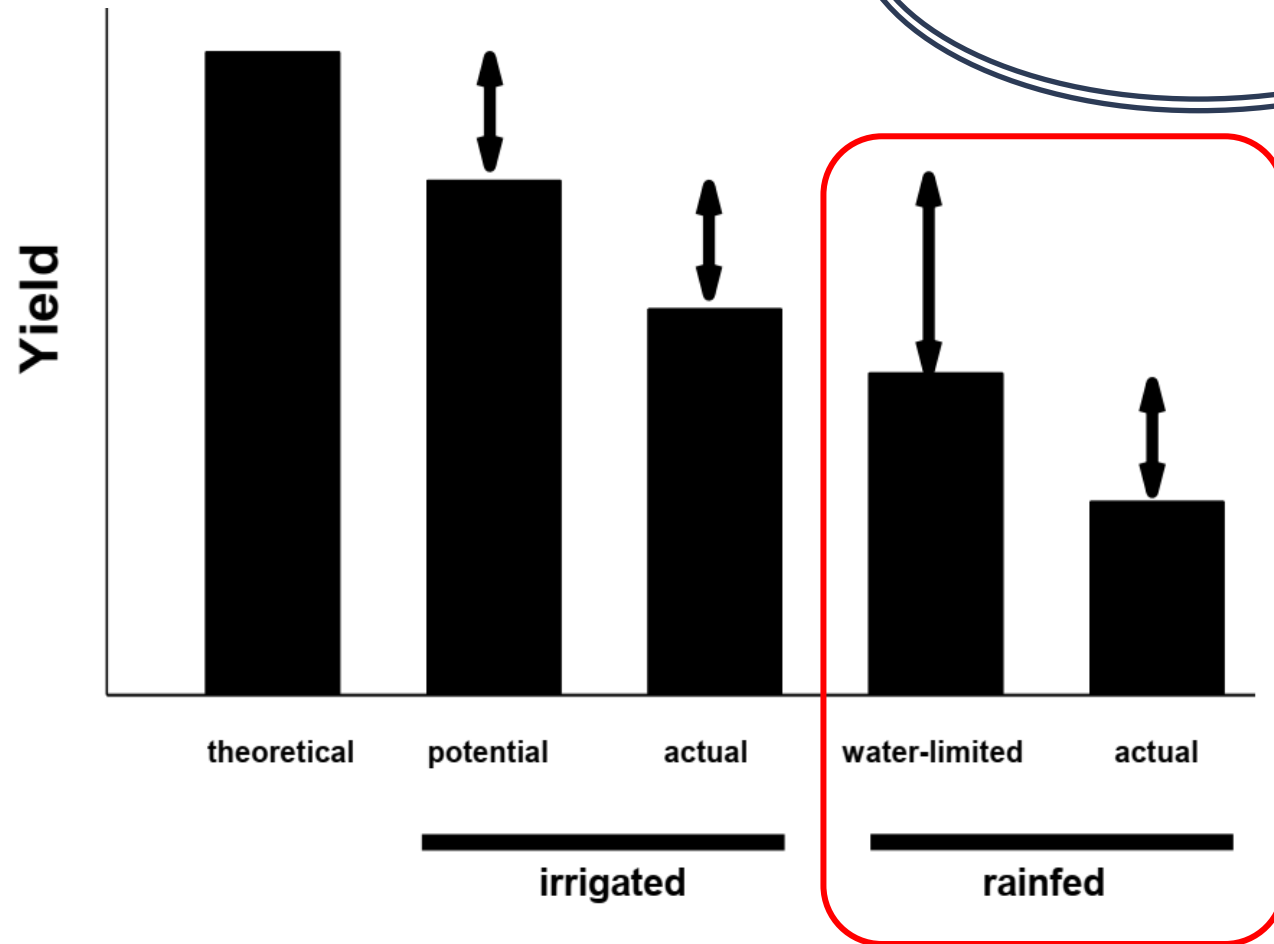
Monsoon Rice



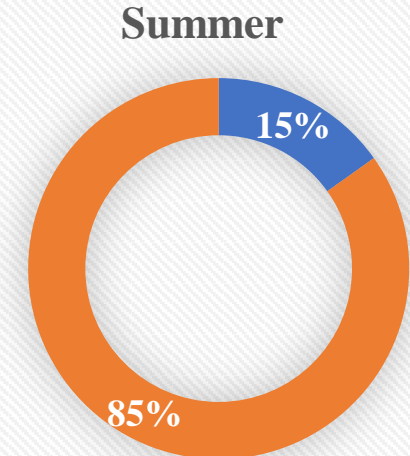
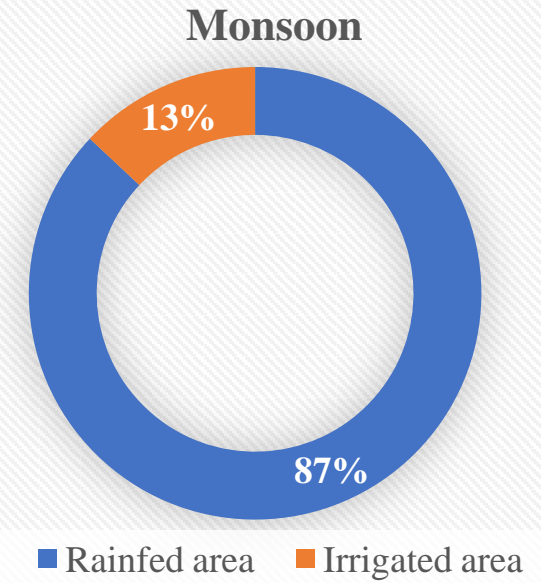
Summer Rice







Priory: to upgrade rainfed field into irrigated field.



Source: Multiple sources (Bingham 1967; Van Ittersum & Rabbinge 1997; Evans and Fischer 1999; Lobell et al. 2009; Connor et al. 2011)

CONCLUSION

- With this study, cost and return under socio-economic constraints is also important factor to encourage the farmers for producing rice to meet a target yield.
- Average rice yield from Demo Farms achieved above the target yield in all related regions and states.
- Varieties used in Demo Farms in Myanmar have potentials producing higher target yield.
- Different farming systems such as SRI, DSR with seeder, TPR using machine and TPR with raised-bed nursery have no significant difference in rice yield under crop management of good farming practices.
- Rainfed rice growing area shall be upgraded into the irrigated field as much as possible to ensure sustainable increase in rice productivity in Myanmar.



WAY FORWARD

- ❑ Future activities would be carried out with deeper statistical analysis in order to support data for making significant decisions.
- ❑ Applied research and capacity building programs will be accelerated to assure rice food security and nutrition security for the country.

THANK YOU VERY MUCH